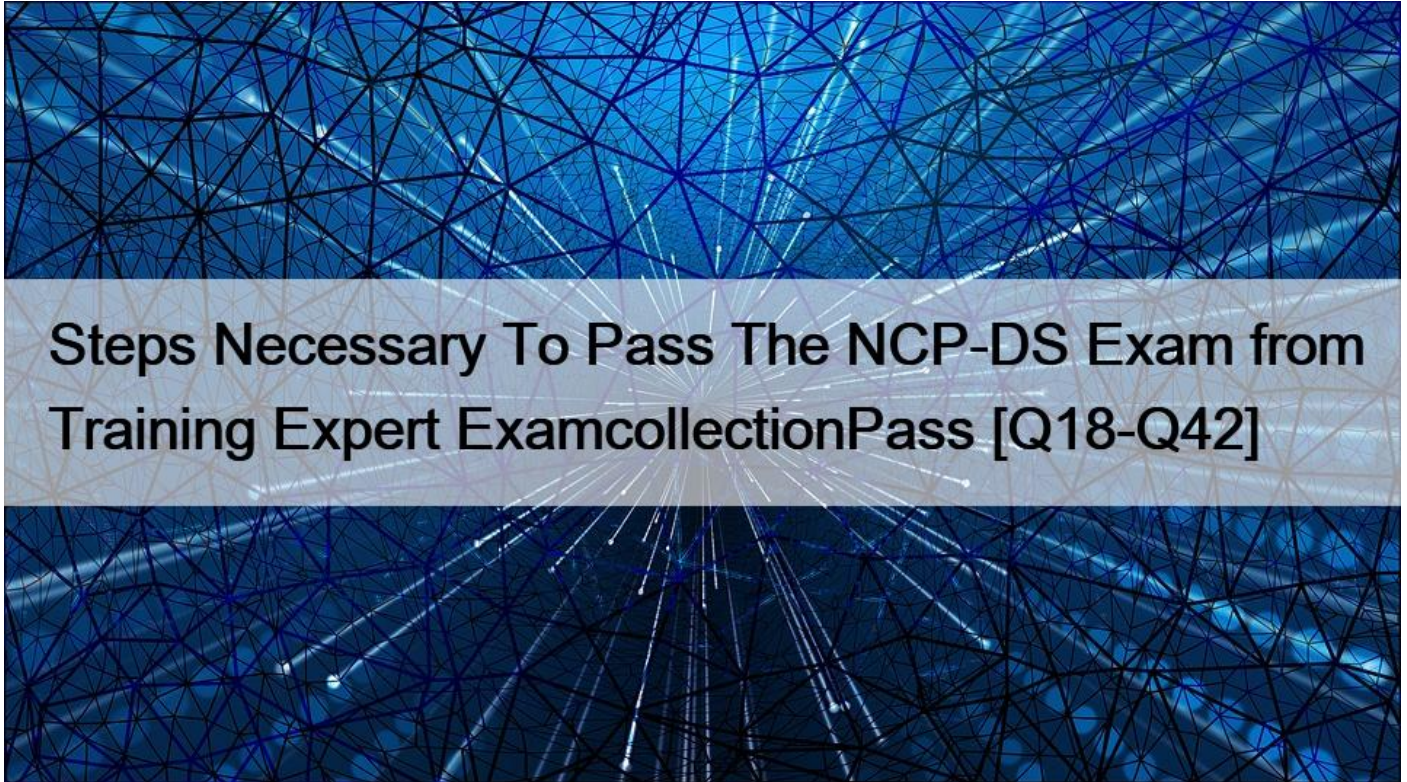


Steps Necessary To Pass The NCP-DS Exam from Training Expert ExamcollectionPass [Q18-Q42]



Steps Necessary To Pass The NCP-DS Exam from Training Expert ExamcollectionPass
Valid Way To Pass Nutanix Certified Professional (NCP)'s NCP-DS Exam

NEW QUESTION 18

An existing Objects bucket was created for backups with these parameters:

- * WORM policy of three years Versioning policy of two years Lifecycle policy of two years The customer reports that the cluster is nearly full due to backups created during a recent crypto locker attack. The customer would like to automatically delete backups older than one year to free up space in the cluster How should the administrator change settings within Objects?
- * Create a new bucket with the WORM policy of two years.
- * Modify the existing bucket lifecycle policy from two years to one year
- * Create a new bucket with the lifecycle policy of one year.
- * Modify the existing bucket WORM policy from three years to one year

NEW QUESTION 19

An administrator has selected Files for the file server implementation in the company. The following key requirements for the environment have been specified:

- * All files written on the shares need to be scanned for viruses

- * Certain file types must never be created or copied to any of the shares
- * End users must be able to restore previous file versions or deleted files on their own
- * Each user should not be able to write more than 100 GB of data on any share Which configuration will meet the above requirements?
- * File Blocking and ICAP on the shares, and Quota policies. ABE and ICAP integration on the Files cluster
- * File Blocking and Quota policies on the Files cluster, and SSR and ICAP integration on the shares
- * File Blocking and Quota policies on the Files cluster, and ABE and ICAP integration on the shares
- * File Blocking and ICAP on the Files cluster, and Quota policies SSR and ICAP integration on the shares

NEW QUESTION 20

An administrator is tasked with creating an Objects store with the following settings ?

- * Medium performance (around 10,000 requests per second)
- * 10 TiB capacity
- * Versioning disabled
- * Hosted on an AHV cluster

Immediately after creation, the administrator is asked to change the name of Objects store.

How will the administrator achieve this request?

- * Enable versioning and then rename the Objects store, disable versioning.
- * Delete and recreate a new Objects store with the updated name.
- * The Objects store can only be renamed if hosted on ESXi.
- * Update the name of the Objects store by using a CORS XML file.

NEW QUESTION 21

An administrator is experiencing the following objects failure error message:

IAM service is not healthy

The object store domain entries appear grayed out in the user interface, as shown in the exhibit.

Which commands should the administrator execute to identify the failure source?

- * A mspcli cluster_list
- B mspcli status -u <UUID-UUID-UUID-UUID>
- * A mspctl cluster_objects
- B mspctl status -u <UUID-UUID-UUID-UUID>
- * A mspcli cluster_objects
- B mspcli status -u <UUID-UUID-UUID-UUID>

* A mspctl cluster_list

B mspctl status -u <UUID-UUID-UUID-UUID>

NEW QUESTION 22

During a recent audit the auditors discovered several shares that were unencrypted. To remediate the audit item the administrator enabled Encrypt SMB3 Messages on the accounting, finance, and facilities shares. After encryption was enabled several users have reported that they are no longer able to access the shares What is causing this issue?

- * Advanced Encryption Standard 128 & 256 are disabled in Linux or Mac OS.
- * The users are accessing the shares from Linux or Mac OS.
- * Advanced Encryption Standard 128 & 256 are disabled in Windows 7
- * The users are accessing the shares from Windows 7 and 8 desktops

NEW QUESTION 23

A company has implemented a new Retention policy requiring all Human

Resources Documents with these characteristics:

- * Able to be stored for 7 years and then automatically deleted.
- * Previous versions of the document must be retained for a minimum for 1 year.

The company is currently using objects as the backend storage for all data. Which action best enforces the Retention Policy?

- * Deploy a new bucket named “humanresources” and Enable Versioning with Permanently delete past versions after 2 years. Additionally enable Lifecycle Policies to Expire current objects after 7 years.
- * Deploy a new bucket named “Human Resources” and Enable Versioning with Permanently delete past versions after 1 year. Additionally enable Lifecycle Policies to expire current objects after 7 years.
- * Deploy a new bucket name “Human Resources” and apply WORM for 7 years.

Have the administrator write a script to clear out the data once the retention period is reached.

- * Deploy a new bucket named “humanresources” and Enable Versioning with Permanently delete past versions after 7 years. Additionally enable Lifecycle Policies to Expire current objects after 1 year.

Explanation

https://support-portal.nutanix.com/page/documents/details?targetId=Objectsv3_1:v31-objectssalient-features-c.h

NEW QUESTION 24

An administrator wants to centralize the storage of CCTV data from all its branches in a remote datacenter. To meet compliance standards, the requirements for this solution are as follows:

- * Data must be kept for a minimum of 10 years
- * Data must be accessible for use at any time
- * Data must be secure

How should the administrator satisfy these requirements?

* Create a Volume Group and mount to a server

2) Configure a Lifecycle policy for a 10year retention

3) Enable encryption on the vDisks

* 1) Create an Objects bucket

2) Configure WORM for a 10year retention

3) Replace Objects's self-signed certificate with a CA-signed certificate

* 1) Create a Storage Container

2) Configure WORM for a 10year retention3) Replace Prism Element's self-signed certificate with a CA-signed certificate

* Create a Files share

2) Configure a Lifecycle policy for a 10 year retention

3) Enable encryption on SMB protocol

NEW QUESTION 25

An administrator needs to configure a Files share with these requirements:

Supports 100 virtual desktop users * Share would host user data

Share is limited to 1 TB, evenly distributed across users Optimized for best I/O performance within the current environment Which two configuration actions should the administrator take to meet these requirements?

(Choose two.)

* Create a distributed share

* Configure a standard share

* Enable ABE on the share

* Add a quota policy to the share

NEW QUESTION 26

An administrator needs to configure VMs in an in-guest cluster running on a vSphere environment. This configuration is for a critical database workload in a demilitarized zone.

The company's Risk Management department requires that data traffic not be exposed to other types of traffic. What should the administrator do to comply with the Risk Management department's requirements?

* Mount shared Disks within the VMs as an RDM.

* Enable NAT for Data Services IP Address.

* Control iSCSI access through the firewall.

* Enable iSCSI Network Segmentation

NEW QUESTION 27

An administrator wants to replicate an Objects bucket between two clusters, managed by separate Prism Central instances.

Which step must the administrator take into account when planning to set up streaming replication?

- * The clusters must be defined on each Prism Central instance as an Availability Zone.
- * The clusters must be defined on each Prism Central instance in a Protection Policy
- * The clusters, managed by different Prism Central instances, do not allow replication of buckets
- * The clusters must be defined on each Prism Central Instance in a Protection Domain.

NEW QUESTION 28

An administrator is upgrading Files. When running the pre upgrade check, the following message is generated:

FileServer in HA state

Which two steps should the administrator take to resolve this error message? (Choose two.)

- * Check if Zookeeper services are running
- * Check for alerts for NVB being down.
- * Check if Stargate services are running.
- * Verify FSVM is booted and not stuck

NEW QUESTION 29

An administrator has to enable both Linux and Windows machines to access the same share served by a Files cluster.

The parameters are as follows:

- * Most of the clients are Windows machines* All users have Active Directory (AD) Accounts
- * All Linux clients are part of the same class 8 network, everyone else must be denied access over NFS
- * .mp3 files are not allowed on the share

How should the administrator configure the multi-protocol share to achieve these requirements?

- * * NFS as the primary protocol SMB with LDAP authentication as secondary
- * Enable Default Access (For All Clients) with CIDR notation values
- * Configure the ICAP settings to deny mp3 files
- * * SMB as the primary protocol NFS with AD authentication as secondary
- * Enable Default Access (For All Clients) with CIDR notation values
- * Select the Blocked File Types checkbox
- * * SMB as the primary protocol NFS with AD authentication as secondary –
- * Enable Default Access (For All Clients) with Netgroups notation values
- * Configure the ICAP settings to deny mp3 files
- * * NFS as the primary protocol SMB with LDAP authentication as secondary
- * Enable Default Access (For All Clients) with Netgroups notation values

- * Select the Blocked File Types checkbox

NEW QUESTION 30

Email distribution lists in the company have been redesigned and IT now has a new distribution list dedicated for all alerts In File Analytics how should an administrator change the recipient list to receive email alerts?

- * Click on the gear icon select Define Anomaly Rules and update the field Anomaly Email Recipients
- * Click on the gear icon, select SMTP configuration and update the field Recipient List
- * Select User menu in the top right corner and click on Collect Logs
- * Click on the gear icon select Update AD/LDAP configuration and update the field Username

NEW QUESTION 31

An administrator of an existing Nutanix cluster running Kubernetes with multiple PODs notices that NCC checks report that some volume groups experience the following error:

Node x.x.x.x:

```
FAIL: Volume Group pvc-XXXXXX-XXXX-XXXX-XXXX-XXXXXXXXXXXX space
```

usage (90%)

The administrator checks the volume group usage from the Kubernetes pod and get different usage results. The current stats are 55% used space.

The results of the NCC check do not match what manually-executed checks report.

What is the cause of this behavior ?

- * The garbage collection process has yet to run.
- * The NCC checks need to be updated to the latest version.
- * Volumes has not received the needed UNMAP commands.
- * Kubernetes is not correctly reporting its storage usage.

NEW QUESTION 32

A company has distributed a new document bundle, entitled Health and Security Policies to all employees H has to verify if key users have opened the document How can an administrator support this request with File Analytics

- * Use Audit Trails search for Files View Audit and filter by operations
- * Use Audit Trails search for Users, View Audit and filter by file
- * Select the file from the Top 5 Accessed list then filter by user
- * Select the User from the Top 5 Active Users list the filter by file

NEW QUESTION 33

A database application that is already leveraging Volumes with a single vDisk is experiencing performance issues.

How should the administrator solve the problem without reconfiguring the Guest OS?

- * Add more Volume Groups with one vDisk each.
- * Enable Jumbo Frames at CVM level.
- * Convert Volume Group to direct attach vDisk.

- * Add more vDisks to the Volume Group

NEW QUESTION 34

Due to a new IP addressing plan for the Desktops network, an administrator needs to change the Files client-side network. Which action should the administrator perform first?

- * Power off the FSVMS
- * Stop the Files service
- * Create a new managed virtual network
- * Remove existing DNS entries

NEW QUESTION 35

Which action will improve the performance of a database server storage using Volumes that is experiencing persistent slow queries?

- * Enable Flash Mode on the Volume Group
- * Disable deduplication on storage pool
- * Upgrade CPUs on FSVMS running databases
- * Create dedicated container for databases

NEW QUESTION 36

An existing Objects bucket was created for backups with these requirements:

- * WORM policy of one year
- * Versioning policy of one year
- * Lifecycle policy of three years

A recent audit has reported a compliance failure. Data that should be retained for three years has been deleted prematurely.

How should the administrator resolve the compliance failure within Objects?

- * Modify the existing bucket versioning policy from one year to three years
- * Modify the existing bucket WORM policy from one year to three years.
- * Create a tiering policy to store deleted data on cold storage for three years
- * Recreate a new bucket with the retention policy of three years.

NEW QUESTION 37

An administrator is using Objects for the company's DevOps department.

The administrator must ensure that the data meets regulatory compliance requirements for many critical sectors and still gives users the option to recover from accidental overwrite or unwanted modification of an object.

Which two components should the administrator enable to complete this task? (Choose two.)

- * Windows Previous Versions (WPS)
- * Self Service Restore (SSR)
- * Object versioning
- * Write-Once-Read-Many (WORM)

NEW QUESTION 38

An administrator needs to upgrade Files in a dark site environment without LCM, Which set of actions should the administrator perform?

- * Setup a web server and point prism to it to fetch the bits and then click Upgrade.
- * Run any NCC checks related to Files and trigger an upgrade from Prism.
- * Download the metadata and binary bits from the portal, upload then to prism and click Upgrade.
- * Connect the cluster to the internet to perform the upgrade through prism.

Explanation

https://support-portal.nutanix.com/page/documents/details?targetId=Acropolis-UpgradeGuidev5_18:Acropolis-U

NEW QUESTION 39

An administrator is upgrading Files and receives the following error message:

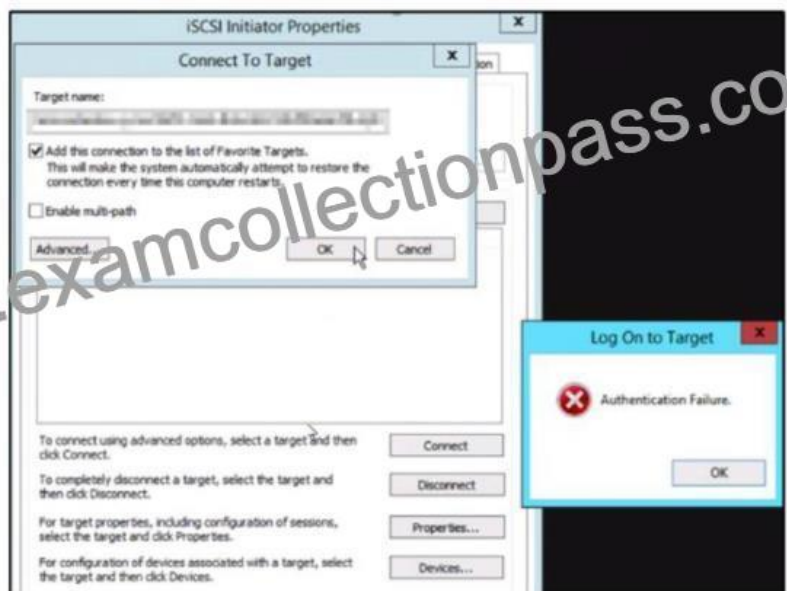
Failed to reach FileServer

In which two ways should the administrator resolve this issue? (Choose two.)

- * ssh into Minerva CVM Leader and execute command cluster start
- * ssh into Minerva CVM Leader and execute command esis stop minerva_cvm
- * ssh into the FSVM and execute command minerva stop fsmv
- * ssh into the FSVM and execute command cluster restart

NEW QUESTION 40

Refer to the exhibit.



An administrator reports that a Volume Group (VG) is no longer accessible on their server.

Upon attempting to reconnect, an error is displayed , as shown in the exhibit.

Which condition would cause this error?

- * The client is trying to access the wrong target.
- * MPIO is enabled for the volume group
- * Encryption is enabled for the container hosting the VG.
- * The wrong CHAP secret has been configured.

NEW QUESTION 41

Which two configuration elements can an administrator find in the File Server -> FILE SERVER DETAILS tab? (choose two.)

- * Share/Export Count.
- * Total Number of Files.
- * DNS Domain Name.
- * Quarantined Files.

NEW QUESTION 42

The marketing department has complained that they are unable to upload or modify MOV files on all marketing file shares in Files. During troubleshooting, the administrator has found that all users are unable to upload MOV files to any share. What is preventing files from being uploaded?

- * Files administrator has added the MOV file extension to the Blocked File Types on the file server.
- * Files administrator has added the MOV file extension to the Blocked File Types on the marketing department share
- * Authentication on the share has been set None
- * Authentication on the share has been set to Kerberos (AD)

Nutanix NCP-DS Exam Syllabus Topics:

TopicDetails
Topic 1- Explain Nutanix files high availability process- Configure Nutanix files with advanced features
Topic 2- Given a scenario, utilize Prism Pro for capacity planning- Utilize file analytics to assess usage patterns
Topic 3- Describe how to monitor performance and usage- Troubleshoot Nutanix Data Services
Topic 4- Performance upgrades- maintenance for Files- Objects implementations- Identify the steps to deploy Nutanix Files
Topic 5- Troubleshoot issue related to Nutanix objects- Troubleshoot a failed upgrade for Files- Objects
Topic 6- Given a scenario, determine product and sizing parameters- Deploy and upgrade Nutanix data services
Topic 7- Troubleshoot issues related to Nutanix volumes- Analyze and monitor Nutanix data services

All NCP-DS Dumps and Nutanix Certified Professional - Data Services Training Courses:

<https://www.examcollectionpass.com/Nutanix/NCP-DS-practice-exam-dumps.html>