

2023 100% Free Heroku-Architecture-Designer Daily Practice Exam With 185 Questions [Q80-Q94]



2023 100% Free Heroku-Architecture-Designer Daily Practice Exam With 185 Questions
Heroku-Architecture-Designer exam torrent Salesforce study guide

NEW QUESTION 80

Which of the following is NOT an advantage of Salesforce Connect over ETL?

- * The data is always fetched on demand
- * If the origin is offline, the data is still available via Salesforce Connect.
- * Standard protocols like OData can easily proxy external data into Salesforce.
- * Data security can be enforced using per-user or per-application authentication.

NEW QUESTION 81

Which two conventions of the Heroku platform reflect the Twelve-Factor methodology's recommendation to

execute the app as one or more stateless processes? (Choose two.)

- * Log messages from each of an app's dynos are kept separate from each other.

- * Heroku apps define process types in a Procfile.
- * A Heroku app's config vars are deleted on deploys and app restarts.
- * Dynos have an ephemeral filesystem.

NEW QUESTION 82

Universal Containers has enabled Field Service Lightning and is looking to enable Entitlements for Work Orders. What should a Consultant take into consideration?

- * Creating Entitlements for Cases and Work Orders must be separated.
- * Managing page layouts and validation rules can be done in Salesforce Lightning
- * Managing page layouts and milestone trackers can be done in the Salesforce mobile app.
- * Creating Entitlements for Work Orders requires Lightning to be enabled.

NEW QUESTION 83

Universal Containers (UC) wants to better understand their service business and Field Service Technician teams' schedules. A Consultant suggested UC start to forecast and plan.

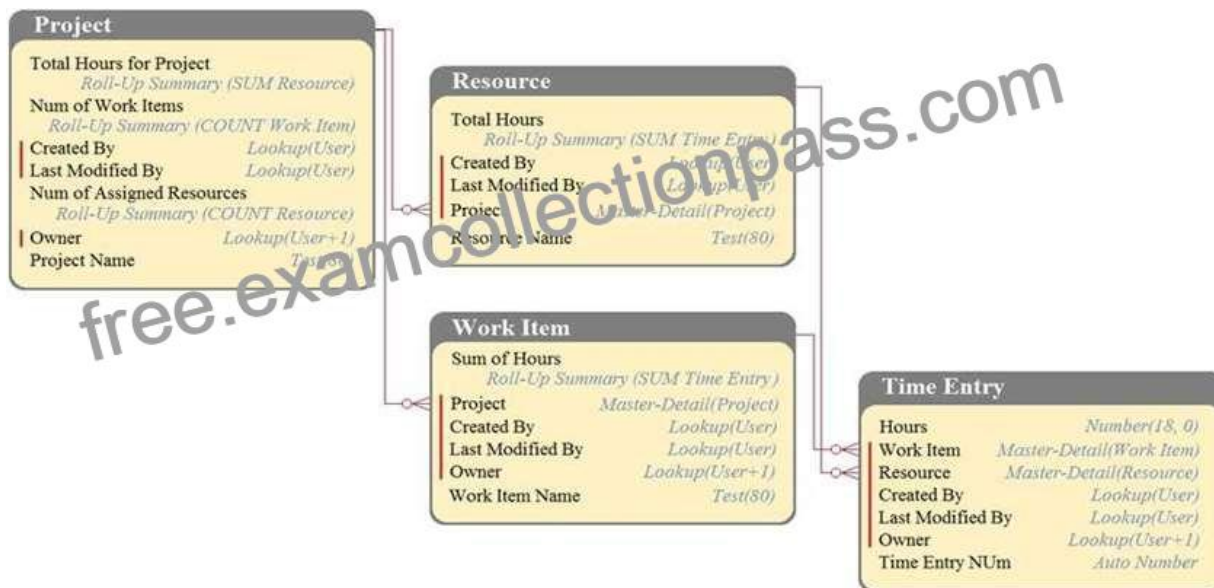
Which two abilities does forecasting and planning provide? (Choose two.)

- * Proactively adjust to demand fluctuations.
- * More consistently meet customer response times.
- * More accurately assign Work Orders based on skills.
- * Proactively adjust Service Contracts.

NEW QUESTION 84

DreamHouse Realty has a data model as shown in the image. The Project object has a private sharing model, and it has Roll-Up summary fields to calculate the number of resources assigned to the project, total hours for the project, and the number of work items associated to the project.

There will be a large amount of time entry records to be loaded regularly from an external system into Salesforce.



What should the Architect consider in this situation?

- * Load all data after deferring sharing calculations.
- * Calculate summary values instead of Roll-Up by using workflow.
- * Calculate summary values instead of Roll-Up by using triggers.
- * Load all data using external IDs to link to parent records.

NEW QUESTION 85

Universal Containers wants to track the total associated price when servicing Work Orders for customers.

Which two of the following should the Consultant recommend? (Choose two.)

- * Use Work Order and Work Order Line Items.
- * Use a custom object to model the Work Order pricing.
- * Use the Einstein Pricing Configurator.
- * Set up Products and Price Books.

NEW QUESTION 86

A client wants to use Heroku Connect to sync data from a Heroku Postgres table to a Salesforce org. The client only needs to sync a specific subset of the rows in the table.

How should this be performed?

- * Add a mapping filter to the table when setting up the sync, and select appropriate criteria from the list.
- * Filter the data in the database, and provide an alternative table or view for use in the sync.
- * Use the Heroku Connect Mapping Query Editor, and add filters to the query.
- * Place Sharing Rules on the records, and restrict visibility to only those rows that are needed.

Explanation

– <https://devcenter.heroku.com/articles/heroku-connect-faq#can-j-use-sharing-rules-to-restrict-record-visibility>

NEW QUESTION 87

A business that works directly with individual consumers (B2C) currently has a home-grown CRM system, but they are moving to Salesforce. The business has 1.2 million consumer records and wants assistance with achieving optimal use of Salesforce functionality while also avoiding data loading issues.

What should an Architect recommend?

- * Create one Account and load individual consumers as Contacts linked to that one Account.
- * Create a Custom object IndividualConsumer_c to load all individual consumers.
- * Load one Account record and one Contact record for each individual consumer.
- * Load all individual consumers as Account records and avoid using the Contact object.

NEW QUESTION 88

You can use Heroku Connect for:

- * Bidirectional data replication
- * Data proxy with Salesforce Connect
- * One-way data replication
- * All of these

NEW QUESTION 89

Which 2 users can remove an application from a Heroku Enterprise Team?

- * An administrator of the Enterprise Team
- * A user with the `manage` permission for the app
- * A user with the `deploy` permission for the app
- * A user with the `operate` permission for the app

Explanation

<https://devcenter.heroku.com/articles/event-driven-microservices-with-apache-kafka>

NEW QUESTION 90

A client is building a collection of web apps that will serve short-lived marketing sites during REST. The apps must support HTTPS connections. They also need to scale up and down at unpredictable intervals. The client is not currently a Heroku Enterprise customer. Given the scenario, what should an Architect recommend?

- * Sign up for Heroku Enterprise and deploy each app to a different Private Space
- * Sign up for Heroku Enterprise without deploying the apps to the same Private Space
- * Sign up for Heroku Enterprise and deploy the apps to the same Private Space
- * Deploy the apps to the Common Runtime

Explanation

<https://devcenter.heroku.com/articles/internal-routing>

NEW QUESTION 91

The Disaster at Universal Containers would like to schedule Service Appointments from the Dispatcher's Console while taking the Scheduling Policy into consideration.

Which three options are available to the Disaster? (Choose three.)

- * Select a Service Appointment from the list, press the `Change Status` action and `Dispatch`.
- * Select a Service Appointment from the list, press the `Candidates` action, and select the best time slot.
- * Select multiple Service Appointment from the list and bulk schedule them Select a Service Appointment from the list, press the `Edit` action and allocate the Resource
- * Create a Workflow to close the Milestone when the Wrap Up is complete.
- * Select a Service Appointments from the list and press the `Schedule` action.

NEW QUESTION 92

In the hierarchy of cloud services, PaaS generally provides more out of the box than:

- * Software as a service (SaaS)
- * Infrastructure as a service (IaaS) and on-premises Infrastructure
- * Salesforce Marketing Cloud
- * Visualforce pages

NEW QUESTION 93

Universal Containers has a Partner Community. Work Orders are assigned to these partners. Partners are not interacting with Service Appointments or Service Resources.

How would a Partner user update the Work Order record from a mobile device?

- * Field Service mobile app
- * Salesforce mobile app
- * Work Order records cannot be updated on a mobile device
- * Salesforce Touch

NEW QUESTION 94

you can build Canvas apps and run them on Heroku with of the following languages:

- * Node, js / JavaScript
- * All of these
- * Python
- * Java, Scala, Clojure
- * PHP

Salesforce Heroku-Architecture-Designer Exam Syllabus Topics:

TopicDetailsTopic 1- Recommend When An App Should Run In The Private Space Runtime Versus The Common RuntimeTopic 2- Demonstrate Knowledge Of Heroku Postgres, Including Data HandlingTopic 3- Recommend Networking Solutions That Use Heroku Private Spaces Or The Common RuntimeTopic 4- Describe The Use Cases Of Dataclips- Security, And Common Use Cases For Follower DatabasesTopic 5- Role Of Buildpacks In Slug Creation- Demonstrate An Understanding Of The Basics Behind Building And Deploying Apps On HerokuTopic 6- Including Various Add-Ons, Buildpacks, And Heroku Buttons- Architect Scalable Solutions That Are Performant Even During High Traffic SpikesTopic 7- Demonstrate How Features Of Heroku Enterprise Can Improve A System's Architecture- Architect Solutions Using Heroku Redis

Use Valid New Heroku-Architecture-Designer Test Notes & Heroku-Architecture-Designer Valid Exam Guide:

<https://www.examcollectionpass.com/Salesforce/Heroku-Architecture-Designer-practice-exam-dumps.html>